

PVC Cable Ducts

FITTING- DIMENTIONS ARE AS PER DIN 19531 and IN 19534 and Conforms to IS : 13591 and Rubber Ring conform to IS : 5382.



Repair Coupler

Connect two length of soil pipes.



Bend 87.5°

Connect two length of soil pipes.



Door Bend 87.5°

Gives 87.5° door with access on the top side, for cleaning purpose.



Reducer

Connects 110 mm O.D. pipe to 75 mm O.D. pipe.



Bend 45°

Used for giving 45° turn to the line. Also used as shoe for rainwater drainage line.



Double Y

Connects 2 branch lines at 45°.



Single Y

Connects branch at 45°.



Double Y with Door

Access is provided at the center for cleaning.



Single Y with Door

Access is provided for cleaning.



Single Tee

Connects branch line at 87.5°.



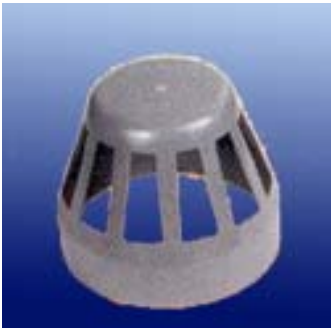
Single Tee with Door

Door is provided at 92.5°.



Pipe Clips

Secures pipes on the flat surface.



Vent Cowl

Caps the upper end of the vent.



Double Tee (4 ways)

Connects 2 branch line at 87.5°.



Cleansing Pipe

In Zenith cleansing pipe, threaded cap/door is provided for extra cleaning. It can be used in rain water as well as sewerage line.



Double Tee with Door

Door is provided at 92.5° .



W.C. Connector

Zenith W.C. connectors are used to drain out the waste from W.C. pan.



Multi Floor Trap

Zenith Multi floor Trap is used for removing water from bathrooms, kitchen and basin through one single lines.



P - Trap

Where inlet and outlet are at right angle to each other.



Q - Trap

Where the outlet is at 45° to inlet



S - Trap

Where inlet and outlet are parallel to each other.



Nani Trap

The Zenith Nani Trap exactly replaces the conventional type C.I. Nani trap. It provides an easy flow of waste water and requires minimum maintenance. It maintains a standard water level. a round jali is placed directly. The Zenith Nani Traps are available in 2 sizes - 3" and 4".

RUBBER SEAL RINGS FOR JOINTS AND ACCESS DOORS

Manufactured in accordance with IS : 5382 for 75 mm / 90 mm / 110 mm sizes. These are made out of natural rubber with a shore 'A' hardness of 40 ± 5 . Provide superior resistance to biological attack. Special design of cross section ensures perfect sealing.

LUBRICANT

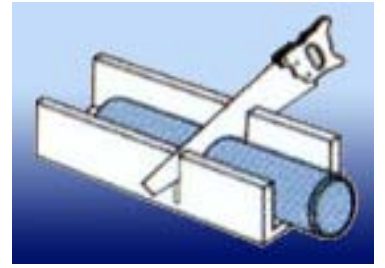
Available in 100gms, 250gms and 500gms packing. Specially formulated for compatibility with rubber seal as well as PVC. Does not support the growth of bacteria or fungi.

TESTING BEFORE USE

Before the system is put into use, it should be tested for leakages by air test, hydraulic test or smoke test.

JOINING PROCEDURE FOR RUBBER RING SOCKETS

1 Cut the PVC pipe with a fine toothed saw to the required length. Pipe should be cut square.



2 Chamfer the edge of pipe to be inserted at an angle of about 15° to about $1/3^{\text{rd}}$ the wall thickness, using a coarse file.



3 Make sure the spigot and socket are thoroughly clean and dry.

4 Insert the pipe into socket without the seal ring and mark along the pipe, when it is fully inserted.



5 Fix the rubber ring into the groove without twisting it.



6 Apply Zenith jointing lubricant to the chamfered end of the pipe, up to the mark made on spigot or to the socket end of the fitting.



7 Push the pipe firmly into the socket fill the gap between the mark on the spigot and socket is about 10mm to allow for thermal expansion.

